



Deze download wordt u aangeboden door **Pick-upnaalden.nl**

Fazantendreef 17-19

8251 JR Dronten

T: 0321 769022

E: info@pick-upnaalden.nl

W: www.pickupnaalden.com

W: www.pickupnaald.com

Facebook: www.facebook.com/pickupnaalden

Twitter: twitter.com/Pickupnaalden

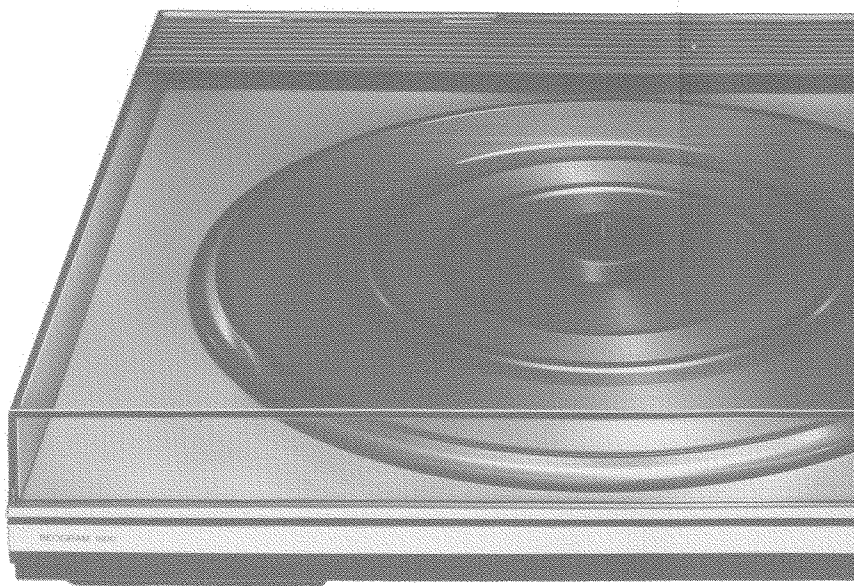
Google+ : plus.google.com/114738445546162436900

BANG & OLUFSEN

BEOGRAM 1800

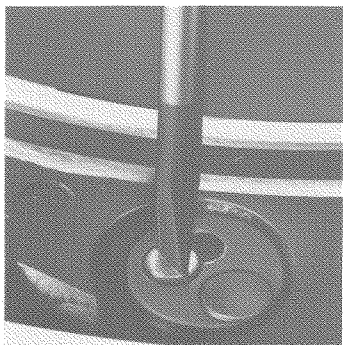






Setting up

Great care has been taken to protect the record player against damage during transportation. After unpacking, proceed as follows:



Assembly after transportation

The inner chassis has been locked rigid with these three screws for transport purposes. Loosen each large screw by turning it anticlockwise, 2-3 revolutions.

Push the protective plate aside so that the head of the screw can go down through the hole, and turning clockwise, screw each screw down as far as it will go.

Lay the platter on the turntable. If you ever want to remove the platter, lift the record spindle and then insert your fingers under the rim of the platter.

Keep the packaging for any subsequent transport.

Space requirements

The Beogram 1800 can be placed in a shelving unit. You will need 40 cm clearance to open the dust cover all the way.

The depth requirement is 33 cm and the width 42 cm.

Connecting to amplifier or radio

Connect the record player cable with the DIN plug to the low impedance pickup input on your amplifier or radio.

Mains

The Beogram 1800 is factory adjusted to 190-265 volts, 50-60 Hz. It can be altered to 110 volts by making a wiring change inside the record player.

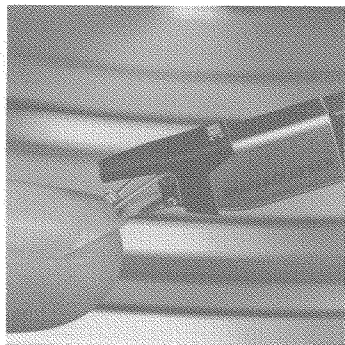
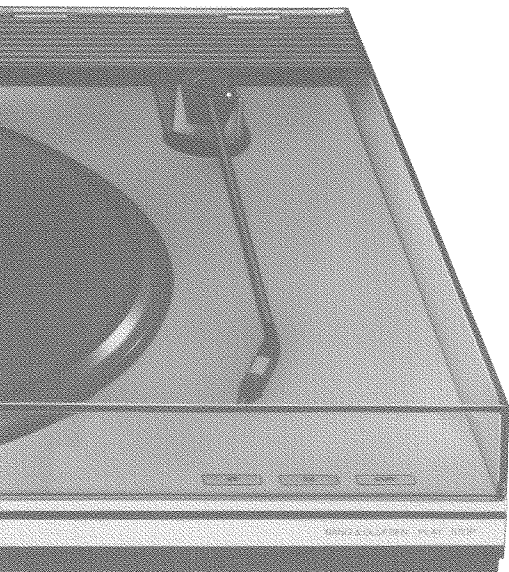
Leave this to your dealer.

This Beogram fulfils the conditions stated in the EEC Directive 76/889 concerning radio frequency interference.

Stylus pressure

The tonearm is factory adjusted to the recommended stylus pressure.

MMC5 – 15 mN, 1,5 grammes



Stylus guard

Flip up the stylus guard.

International guarantee

This Bang & Olufsen product carries a guarantee against defects in workmanship and materials. It is a national guarantee, extended by Bang & Olufsen in the country in which the product was bought. The terms of the guarantee apply principally to the country of purchase but will be met by authorized Bang & Olufsen dealers in other countries.

For the UK market only.

IMPORTANT

The wires in this mains lead are coloured in accordance with the following code:

Blue: Neutral

Brown: Live

As the colours of the wires in the mains lead of this apparatus may not correspond with the coloured markings identifying the terminals in your plug proceed as follows:

The wire which is coloured blue must be connected to the terminal which is marked with the letter N or coloured black. The wire which is coloured brown must be connected to the terminal which is marked with the letter L or coloured red.

Ensure that your equipment is connected correctly. If you are in any doubt, consult a qualified electrician.

Dusting off records

Press CUE. The turntable revolves without the arm being lowered. When you have finished using the record cleaner, resume playback by pressing CUE.

There is no need to use an anti-static mat (e.g. carbon plate) under records, as the platter itself provides excellent metallic contact.

Handling records

Great care has been taken right the way through the Beogram to ensure that you can play your records a great many times without any deterioration in sound quality.

However, you can also do a lot yourself to minimize record wear, by making sure you don't get dust and fingerprints on records.

Even though you keep your records in their proper covers, you have to be careful how you take them out, as friction against the inner sleeve imparts a static charge to the record, attracting dust.

Hold the cover so that its sides bend outwards, away from the record. Put your hand in under the record so that your index finger is on the centre hole and your thumb on the rim, without touching the playing surface.

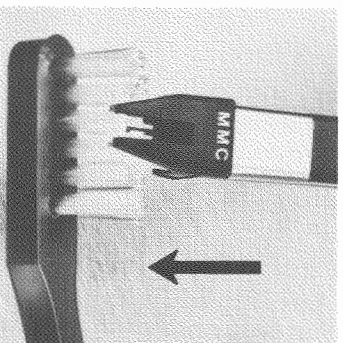
Draw the record out in such a way that only the rim comes into contact with the sleeve.

Hold the record by the rim when placing it on the turntable and close the Beogram's dust cover.

Replace the record in its cover in the same way, taking care that the playing surfaces do not rub against the sleeve.

Removing the cartridge

Hold the tonearm firmly with one hand, while carefully moving the cartridge from side to side and pulling outwards with the other.



Cleaning the stylus

Sound distortion may be due to dust on the stylus. Use the

cleaning brush supplied, brushing only in the direction indicated by the arrow so as to avoid damaging the cantilever.

Beware of chemical fluids for cleaning records and stylus.

They can contain solvents which will damage parts of the cartridge.

Metal surfaces

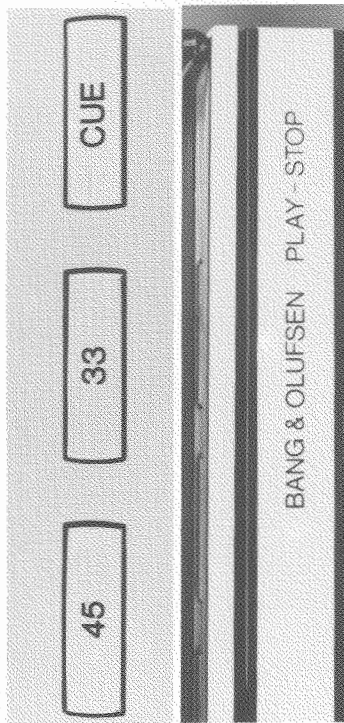
The chassis and turntable can usually be kept clean with a dry cloth.

Be careful with the stylus. Put the stylus guard in place before wiping the metal surfaces or moving the record player.

Grease stains can be removed with a lukewarm detergent solution on a soft cloth. Wipe dry with a clean cloth.

Dust cover

We recommend Ajax Window Cleaner or its equivalent for cleaning the transparent dust cover. Do not use spirits.



OPERATION

The dust cover stays up, even when only half open. You can also start and stop play with the dust cover closed.

Press **PLAY** on the righthand side of the front bar.

The Beogram 1800 registers whether a 30 cm or a 17 cm record has been put on, and automatically cues the tonearm onto the start groove and selects the correct speed.

To stop play before the end of a record, press again in the same place, **STOP**.

Pause during play

Press **CUE**. The tonearm lifts off the record. To resume play from the same place, press **CUE** again.

Moving to another track

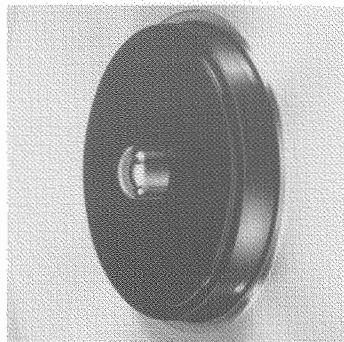
Press **CUE**, move the arm to the track you want and press **CUE** again.

Special records

17 cm 33 rpm: press **PLAY** and 33.

30 cm 45 rpm: press **PLAY** and 45.

25 cm 33 rpm: move the pickup in to the start groove and press **PLAY**.



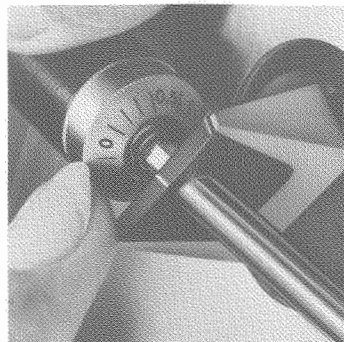
Centre adaptor

Fits records with large centre holes and is pressed down automatically with normal records.

Checking and adjusting the counterweight

Ordinarily the counterweight scale will be adjusted to indicate the correct stylus pressure value. If you want to check the scale, e.g. when replacing the pickup, do as follows:

- Press the stylus guard down
- Press the centre adaptor half down with your left hand, so that the notches at the bottom are no longer visible
- Press **PLAY** and release the centre adaptor



- Unplug the record player from the mains
- Turn the counterweight clockwise towards 0 until the tonearm is in equilibrium, i.e. until it »floats«.
- If the revolving scale is not at 0, hold the black part of the counterweight with your right hand and turn the scale with your left hand until 0 faces upward
- Take hold of the black part and turn the counterweight anti-clockwise to the recommended stylus pressure, e.g. 1,5 gramme
- Plug the record player back into the mains socket
- Press **STOP**
- Flip the stylus guard up.

